



Our mission is to become your reliable business partner.

[Company name] Narita Airport Business Corporation (NAAB)

[Establishment] August 28th, 2002

[Representative] President & CEO Hideharu MIYAMOTO

[Capital] 60 million yen

Shareholder: Narita International Airport Corporation (NAA) 100%

[Location] Headquarter

1-1 Aza-Furugome, Furugome, Narita City, Chiba Prefecture, Japan

Narita International Airport 2nd Parking Lot North Building, 1F P1056

TEL 0476-32-6566 FAX 0476-32-6567

[U R L] <http://www.naab.co.jp>

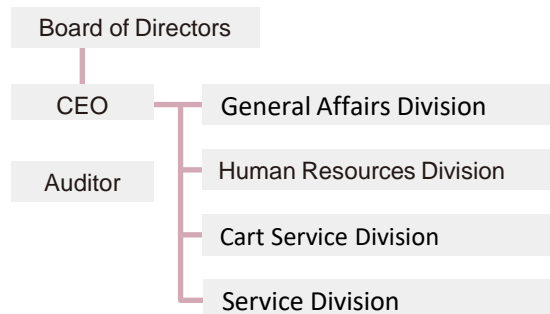
[Organization] As of April 1, 2024

Officers 5 members

(3 Full-time executives,

2 Non-executive Directors)

Employees 293 members



Our company was established in August 2002 as a wholly owned subsidiary of Narita International Airport Corporation (NAA) and provide a range of services on behalf of NAA, including baggage cart services, maintenance and management of plants, operation of airline lounges and business jet terminals. In addition, we provide various service businesses as a company that supports the improvement of airport safety and service quality through temporary staffing, job placement and research services for companies at airports.

The global aviation industry is now facing a serious human resources problem at a time when it is overcoming the biggest crisis in civil aviation history - a pandemic - and turning from a recovery in aviation demand to further growth. The Government is also strengthening cooperation with airport stakeholders to strengthen the service delivery system to support the sustainable development of the aviation industry.

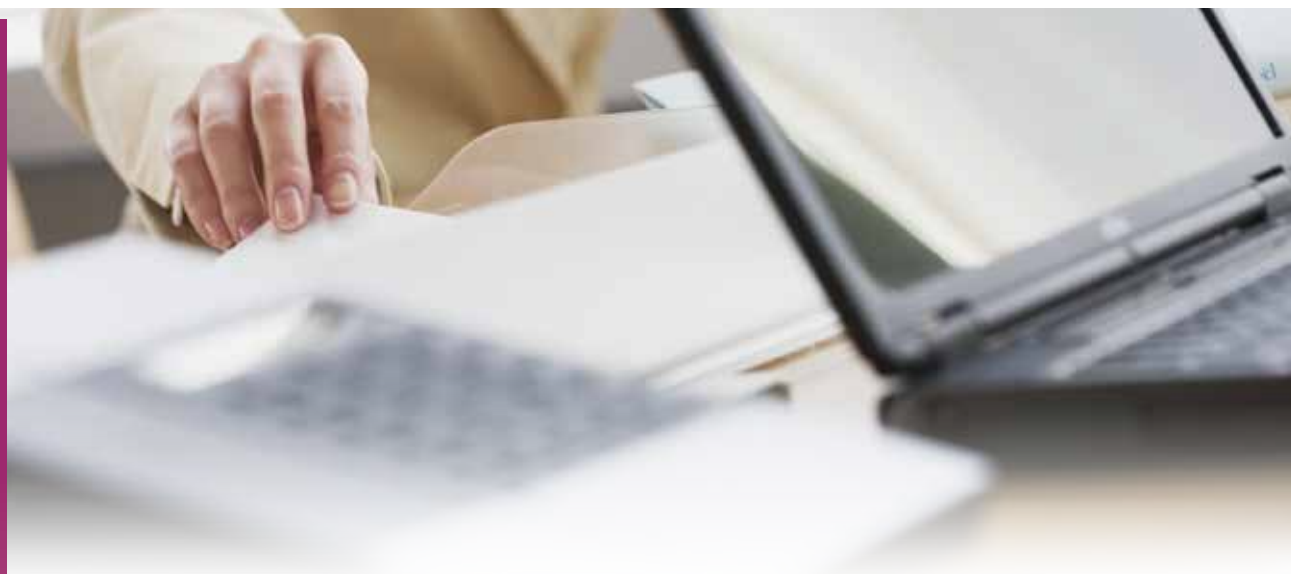
As a member of the NAA Group, we will make maximum use of the know-how we have accumulated in the human resources business and various service businesses at airports to meet the needs of airport-related companies in detail and contribute to the improvement of Narita Airport's world-class international competitiveness through the pursuit of world-class safety and high quality services. We hope to contribute to the improvement of Narita Airport's world-class international competitiveness through the pursuit of world-class safety and quality services.

All employees will continue to look towards the future, aiming to be a company that actively takes on new business challenges while improving and developing existing businesses, as well as being able to respond quickly to customer needs.

President & CEO **Hideharu MIYAMOTO**



Our Business



Providing outsourcing, staffing and employment placement services

[Business Details]

- Staffing and employment placement
- Outsourcing contracts
- Merchandising
- General Leasing
- Research service and consulting
- Greenery maintenance/management
- Printing
- NARITA PREMIER LOUNGE

Staffing business

Minister of Health, Labor and Welfare registration number
派12-100016

Employment placement business

Minister of Health, Labor and Welfare registration number
12-コ-300030



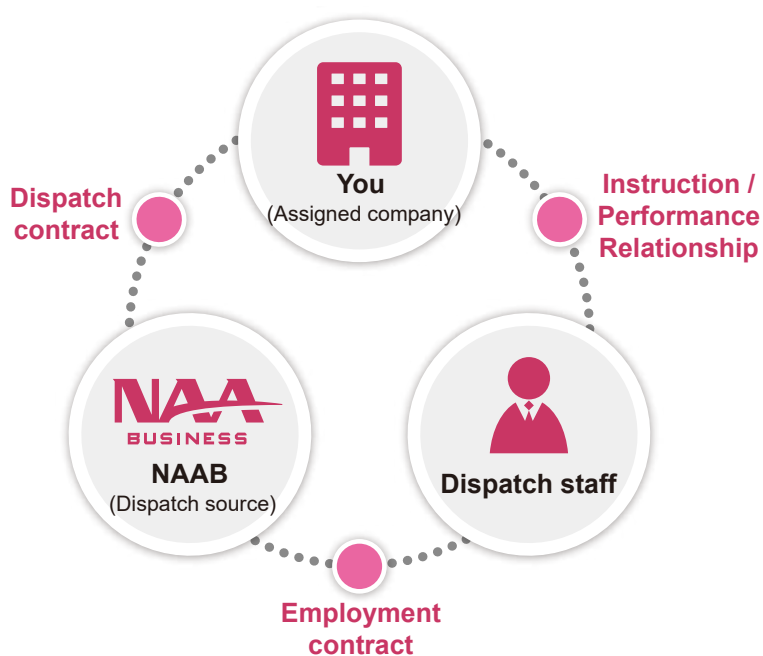


Providing work-ready staffs and skillful talents at the right time.

How staffing works

Staffing Business is based on the relationship of three parties: the Dispatch staff, You (Assigned company), and NAAB.

Employees of NAAB will be dispatched to the assigned company. The assigned company will give instructions to the dispatched staff, and NAAB will be responsible for salary payment and social insurance procedures.



Example of staffing utilization

- Dispatch additional staff for sales seasons
- Sudden vacancy replacements
- For short term to long term projects
- When requiring accurate knowledge and skills
- Countermeasure for unexpected business
- Providing substitutes for employees taking parental leave, family care leave etc.
- Fully work-ready
- Polite and Well-behaved

Delivering outstanding business results for various companies in Narita Airport.

Staffing business II



We're ready to all of your concerns.

We provide the best solution based on your requirements.

Flow

Request/Consultation/Request for recruitment



Confirm details and conditions



Solution

Temporary staffing

We provide human resources upon customer's request.

Staff introduction



Sign dispatch contract



Start employment



Follow-up by NAAB

Staffing with probation

Certain period (up to 6 months) can be set as a period for judging competence.

Introduction of candidates



Interview



Sign dispatch contract



Start employment



Follow-up by NAAB



Start direct employment

Employment placement



Meeting you're requests with swift action !

We hold career counseling with job applicants and analyze their achievements, skills, and careers. This has resulted in high probability of introducing jobs that matches their competence.

Now that we've started handling human resources from the Republic of Fiji from 2019, we are able to introduce not only domestic human resources but also from overseas, which means that we can fulfill your requests even more.

What is Employment placement service ?

Our main service is to introduce competent personnel and support recruitment. In addition to the selection and introduction of human resources, we also carry out various services related to employment.



Examples of agency business

- Support for creating job listings
- Selection and recommendation of applicants who meet recruitment requirements
- Preparation, confirmation and scheduling of job interviews
- Notify interview results to applicants
- Negotiate terms of contract such as salary etc

Scope of work/All occupations

- Within Japan
- Republic of Fiji

Market Research & Survey



Delivering outstanding business results for various companies in Narita Airport.

Leave the research work to us !



Are the customers really satisfied ?



Want to minimize risk..
First, I need basic data.



What actually is the customer's request ?
Want to know their honest opinions !

Consult us before you worry. Researching is the first step to assurance.

We will undertake surveys in response to customer requests, utilizing professional methods based on our experience as a group company of Narita International Airport Corporation.

We will also assist you in carrying out a smooth survey by taking care of various airport related pre-adjustments and registrations.

We collect accurate data and provide precise survey results.

You can count on us for multilingual surveys.

[Past projects]

- Survey on access conditions within the airport
 - Customer satisfaction survey
 - Fact-finding survey regarding Airport facility usage
 - Airport congestion situation survey
 - Fact-finding survey regarding shopping in the airport
 - Airport user's interview survey
 - Various interview surveys in multiple languages
- Supported languages: English,
Chinese (traditional/simplified), Korean



Outsourcing business(Cart/Greenery)/ Merchandising



Outsourcing business

Baggage cart service business

We support your comfortable and safe travels by ensuring that you can move smoothly inside Narita International Airport. Our business include efficient placement of carts, user guidance, maintenance and inspections.



Airport Terminal greenery business

At Narita International Airport Terminals 1 and 2, travellers can feel an enrich moment being surrounded by greenery with our heart of "OMOTENASHI", the Japanese way of hospitality.



Merchandising

Cart sales for airports

We are the Official distributor of airport cart manufacturer, Wanzl Germany in Japan. The product has great reputation among many domestic airports. We provide various options to meet the requirements of each airports.

[Wanzl Voyager 3000]

- By adopting an aluminum body, the product has achieved high corrosion resistance and light weight design.
- The large casters with good operability enables silent traveling.
- High safety has been approved by TUV, one of the worlds greatest certification authorities.



Printing Service

We seek to create work that go beyond our customer's expectations, with high-quality, reasonable price and quick delivery. We consistently support you from designing all the way to processing.

- We offer designing ideas for company catalogs and various brochures.

Flower gift sales

We create a peaceful and beautiful enviroment atmosphere with flowers and greenery. Based on your occasions and budget, we arrange and deliver the perfect seasonal flowers.

Original novelty goods

We offer wide selection of fair priced promotional goods that will result in both advertising and customer attraction. Let us work together to create a one-and-only item that suit your needs.

Outsourcing business (Reception)



Outsourcing business

Reception business

Charged Lounge Receptions

We will be happy to propose suitable rooms so that the guests at Narita International Airport can relax and enjoy in their private space.



Narita Travelounge Reception

While waiting for your departure, please enjoy live take-off and touch-down scenery of the aircrafts in a sophisticated atmosphere.

Business jet terminal reception

We support guests using the Premier Gate (an exclusive terminal for business jets) so that you can easily secure private space with full security.



Narita International Airport Corporation

Head office reception

With the spirit of hospitality, our professional staff are always ready for polite responses, accurate guidance and will provide you reliable services.



Providing rich and high quality moments before boarding

Airline shared lounge "NARITA PREMIER LOUNGE"

We operate the airline shared lounge "NARITA PREMIER LOUNGE" at Narita International Airport Terminal 1 Satellite.

Based on simple design, sophisticated interiors are arranged at the lounge. We also provide a Japanese-style room so that guests can feel some Japanese spirit. Full range of food and drinks are available and guests can spend a luxurious time in a high-quality lounge before departure.

Sophisticated interiors placed in a simple designed lounge

Spend luxurious time surrounded by simple and sophisticated interiors.

We offer various types of chairs and tables to meet the needs of our guests.



A Japanese-style room is available for overseas guests to feel the Japanese spirit.

We offer a Japanese-style room, created by carefully selected materials from all over Japan. The room was built by Kanazawa's master craftsmanship, who inherit the refined traditional techniques.

Once you take off your shoes and step into the room, you can feel the scent of wood emitted by Japan's highest quality "Kashimo cypress" and the soft light that reaches through "Echizen Washi" (Traditional Japanese Paper), which has a history of 1,500 years.



Meals and drinks

We offer a wide variety of meals including Japanese and Western dishes.

We provide carefully selected wines. Please enjoy the best wines that suit your taste.



Various events

We introduce seasonal Japanese cultural events.



Japanese tea ceremony

Location	Narita International Airport Terminal 1 Satellite 1F 4F (Post-departure procedure area)
Business hours	7:30 ~ 21:00
Target users	Guests who meet the usage conditions specified by your airline. Terms of use vary depending on each airline.
Services provided	Meals, drinks (soft drinks, alcohol), newspapers/magazines, free WiFi, restrooms/shower